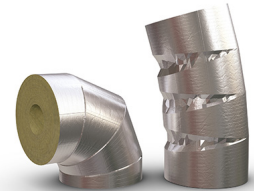


# PAROC Pro Bend WR 140 Clad

PAROC Pro Bend WR 140 Clad is a prefabricated insulation component made of non-combustible stone wool pipe section with outstanding water repellency, designed for thermal insulation of pipe elbows in industrial pipework. It has a durable and watertight aluminium facing.

PAROC WR products are an excellent tool for minimizing the risk of CUI (corrosion under insulation), keeping the outstanding water repellent properties at elevated temperatures. PAROC WR products are safe to use in combination with painting operations.

PAROC Pro Bend WR 140 Clad is designed to be used in outdoor applications. Together with the installation tape, PAROC Pro Clad products provide a solution against mechanical stress (e.g., puncture resistance) and demanding weather conditions (e.g., water ingress) without additional cladding.



## Product Data Sheet

4.2.2026

Dimensions (mm)	Inner Diameter	Thickness
	15 - 168	30 - 60

Nominal Density	140 kg/m <sup>3</sup>
	Other dimensions are available on request.

### Product characteristics according to EN 14303

Designation Code	MW-EN 14303-T8/T9-ST(+)+680-WS1-MV2-CL10
DoP Number	40700
Thickness Tolerance, T	T8/T9
Reaction to Fire, Euroclass	A <sub>2</sub> -s1,d0: OD ≤ 300 mm C <sub>s</sub> -s1,d0: OD > 300 mm
Maximum Service Temperature - Dimensional Stability	680 °C
Water Absorption, Short Term, W <sub>p</sub>	≤ 1 kg/m <sup>2</sup>
Water Vapour Diffusion Resistance	MV2
Trace Quantity of Water-soluble Chloride Ions	≤ 10 ppm
Thermal Conductivity, λ <sub>D</sub>	See table below

°C	10	50	100	150	200	300	400
λ <sub>D</sub> W/(m*K)	0.038	0.041	0.047	0.054	0.063	0.085	0.110

### Fire Properties

PAROC Stonewool products are capable of withstanding high temperatures. The binder starts to evaporate when its temperature exceeds approximately 200°C while the fire protecting properties remain unchanged. Stone wool has a high melting point of over 1000°C (internal test method).

### Moisture Properties

PAROC WR Pipe Sections are providing a very low water absorption (average water absorption level <0,1 kg/m<sup>2</sup> after 300°C/24h prebake) according to BS EN ISO 12623, based on 3rd-party testing in 2019 and internal testing in 2023-2024.

---

**Environmental Properties**

The European Certification Board for Mineral Wool products (EUCEB) trademark on our products confirms that PAROC Stonewool fibre fulfils the bio solubility requirements of EU directive No. 1272/2008. The German RAL quality mark confirms that the bio solubility and safety requirements are met according to the German technical regulation TRGS905.

PAROC Stonewool is made of stone. The volume of the product is ~98% air and only ~2% fiberized stone. The excellent properties of the product are based on the properties of the raw materials. PAROC Stonewool maintains its insulating ability and dimensions throughout the reference service life of the the building, which is considered to be minimum 50 years.

PAROC Stonewool is reusable and can be recycled into new stone wool products.

---

**Certificates and Approvals**

EC Certificate of Conformity

0809-CPR-1016

PAROC WR products are safe to use in combination with painting operations: PAROC WR products are 3rd party tested, passing the requirements of the most stringent class of the LABS conformity (paint wetting impairment) standard, VDMA 24364.

PAROC pipe sections can be used to satisfy the requirements as given in the tables for insulation thickness in BS5422:2023. PAROC can offer help and assistance to customers to confirm that the insulation systems proposed do in fact achieve the necessary performance criteria. PAROC pipe sections conform to BS3958-4.

---

**Storage and Installation**

PAROC products should be stored in packaging protected against external weather conditions.

Installation in accordance with the design assumptions or based on the manufacturer's instructions.

---

Technical information contained herein is furnished without charge or obligation and is given and accepted at recipient's sole risk. Because conditions of use may vary and are beyond our control, Paroc makes no representation about, and is not responsible or liable for the accuracy or reliability of data associated with particular uses of any product described herein. Paroc reserves the right to modify this document without prior notice. PAROC is a registered trademark of Paroc Group Oy. This data sheet is valid in following countries: international use (general information).